

OVERVIEW OF COMMUNITY

COMMUNITY NAME

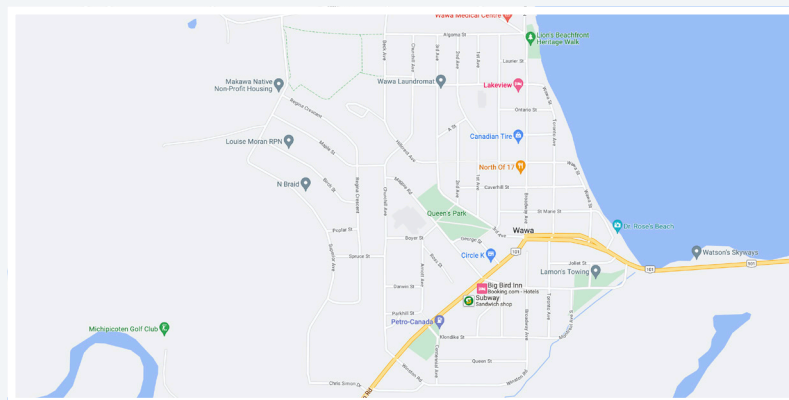
Wawa , North Algoma

Updated August 2023

MUNICIPAL WEBSITE

www.wawa.cc

MAP WITH LOCATION



COMMUNITY DESCRIPTION

POPULATION AND DEMOGRAPHICS

First Nation Communities served by clinicians: Michipicoten First Nation located 20km from Wawa
<https://michipicoten.com/>

Population Wawa/North Algoma: 3000 Median Age: 47
More demographic information can be found [here](#).

AMENITIES

Amenities

Vibrant business district: grocery store, 2 pharmacies, 4 gas stations, electric car charging stations, Canadian Tire, Tim Hortons, Red Apple department store, 10 hotels, 8 restaurants serving area

Activities

Tourism destination – Lake Superior Provincial Park, numerous hiking, fishing, camping opportunities

Must see/do: Scenic High Falls, blueberry picking, Sandy Beach Group of 7 walk, Boreal walk along Wawa Lake waterfront.

To consider:

Things to do while on placements/visiting – complementary pass to community fitness centre with sauna; Equipment provided for cross-country skiing, snowshoeing, fishing, etc. Join in sports including hockey, skating, pickle ball, curling, baseball, dance, golf.

Schools

K-12 English, French, French Immersion, Public and Catholic

See below links for more details:

- www.roadstories.ca/wawa-ontario-is-more-than-a-goose-and-a-moose
- www.ontarioparks.com/park/lakesuperior
- www.naturallysuperior.com
- www.eatshoplive.ca

TRAVEL OPTIONS

Wawa is located on TransCanada Hwy17, 225km north of Sault Ste. Marie and 470 km east of Thunder Bay.

Air & Bus

- Wawa municipal airport is available for private plane service from Toronto Pearson to Wawa
- Bus service connects Wawa to Thunder Bay and Sault Ste Marie

HOUSING/ACCOMMODATION

- Housing is provided for locum physicians and learners
- House available for new physician relocating to Wawa (Live for Free in Wawa*)

SPOUSAL EMPLOYMENT

Recruitment is a family enterprise, and we will actively support the relocation process through sourcing spousal employment opportunities. More information: <https://www.wawarehc.com/>

CLINICAL SERVICES

CATCHMENT AREA AND DEMOGRAPHICS

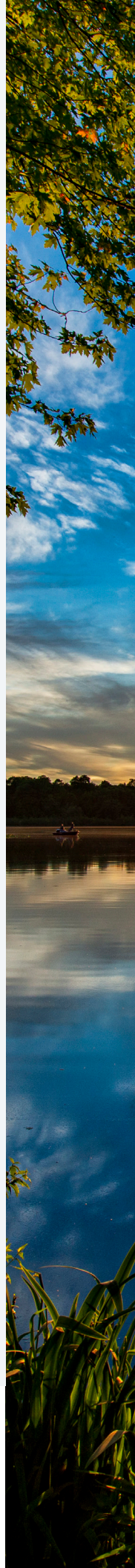
North Algoma population: 5700

- 65% age 15-64
- 3% over 65
- 20% Francophone
- 13% Indigenous

HOSPITAL DESCRIPTION / SERVICES

Lady Dunn Health Centre: www.ldhc.com

- 10 acute care, 2 respite, 16 LTC beds, 24 hour ED with NP, RN and on-call physician
- Surgical program, stress testing, continuing education LEG/Sims, diagnostic and therapeutic services, telehealth, nurse practitioner program, counselling, diabetes education, outreach clinics
- Well-equipped ED with VCC, CMAC, glidescope, point of care ultrasound, OH ED Peer-to-Peer Program



PRIMARY CARE MODEL / CLINIC SETUP / ALLIED HEALTH SUPPORT

Wawa Family Health Team: www.wawafamilyhealthteam.com

- Physicians are co-located with an amazing team of allied health care providers who work in a Family Health Team Model.
- Collaborative model of care with our FHT colleagues, which include RNs, NPs, dietitian, geriatric nurse, social worker.
- Allied Health Care team supports: Smoking Cessation Program, Cardiac Rehab, DOAC teaching, PN Care, Diabetes care, Medical Abortions, Memory Clinics, End of Life Care Planning
- Clinic is conveniently located in the hospital. Referral centre is Sault Ste. Marie.
- 20 minute appointments – no fit-ins i.e. 15 patients per day (10 am to noon, 1 to 4pm)

OTHER CLINICAL VENUES AND SERVICES

- LTC is co-located in the hospital
- Homecare partners office onsite
- One bed palliative care suite in hospital
- Other clinical services provided by local physicians include: endoscopy (gastroscopy and colonoscopy), memory clinic, medical abortions, exercise stress testing

SUPPORTS AND EXPECTATIONS FOR LOCUMS OR LEARNERS COMING TO THE COMMUNITY

TEACHING

All physicians are Assistant or Associate Professors with NOSM University and host UG and PG learners from NOSM University or other universities throughout the year.

LIVING: HOUSING AND ACCOMMODATIONS

- House available for new full time physician
- House, hospital apartments, offsite apartments, B&B, available for locums and learners

TRANSPORTATION

Most will use personal vehicle, or rental from Sault airport if flying in.

FOOD OPTIONS

- Stores: John's Your Independent Grocer, The Red Apple Department Store.
- Many restaurant options both fast-food and fine dining and everything in between. Featuring International, Caribbean, Chinese, South-East Asian, Indian and European cuisine.
- See more here: www.eatshoplive.ca

COLLEGIAL SUPPORTS

Very collegial group. Provide support in ER for new graduates.

COMMUNITY VIDEO: <https://www.facebook.com/LadyDunnHC/videos/398869711995821>

COMMUNITY CONTACT INFORMATION

Ann Fenlon

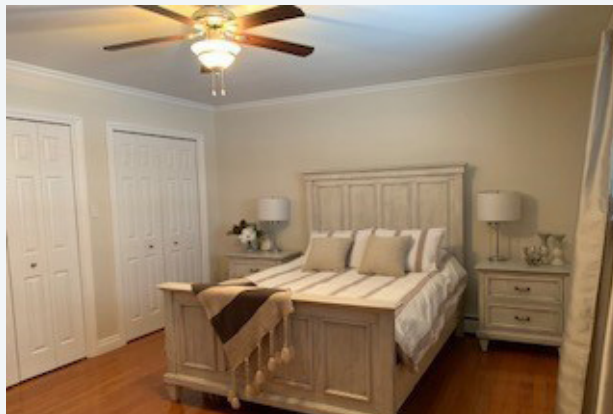
North Algoma Medical Recruitment and Retention Co-ordinator

Email: afenlon@ldhc.com

Phone: 705-856-2335 ext 3152



- Locum/learner housing



- Locum/learner housing



- Wawa



- Wawa



- Wawa goose



- Lady Dunn Health Centre



- Lady Dunn Health Centre



- Lady Dunn Health Centre