



TOWARDS AN INTEGRATED CONTINUUM OF CARE

IMPROVING THE CARE AND
ACCOMMODATION OF ELDERLY
IN THE NORTH SHORE TRIBAL
COUNCIL



THE TEAM

PROJECT DIRECTOR



EDWARD STARR
PARTNER,
SHS CONSULTING

PROJECT MANAGER



CASSANDRA VINK
PRINCIPAL,
SHS CONSULTING

SENIOR RESEARCH ANALYST



JOSINA VINK
SENIOR RESEARCH &
POLICY ANALYST,
SHS CONSULTING

HEALTH POLICY ADVISORS



**BALANCE OF CARE
GROUP**
UNIVERSITY OF
TORONTO

FIRST NATIONS ADVISOR



ALEX JACOBS
ELDER,
WHITEFISH LAKE

DESIGN PRINCIPLES



Improve the quality of life of seniors;



Ensure direction comes from the community;



Build on what is already working within the communities;

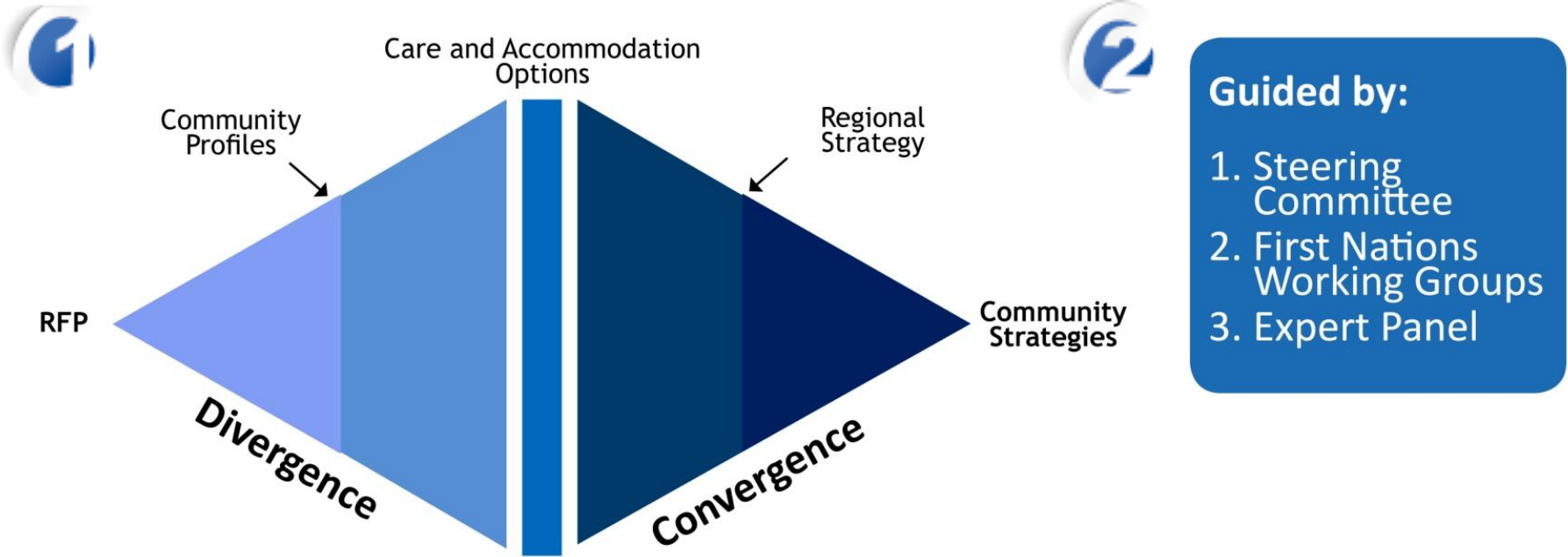


Respect the unique situation of each community; and



Embrace the local culture and traditional insights.

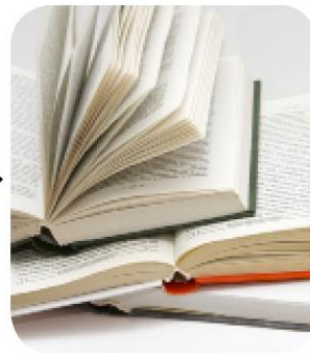
OUR PROCESS



Demographic and Health Research



Talking Circles



Best Practice Research



Participatory Planning Sessions

BACKGROUND

Growing number of seniors

70% live with family

High incidence of chronic health conditions

Growing numbers of mental health issues




¼ of homes need repairs

52 seniors housing units


Two communities with no seniors housing

Some professional services and home supports

WHAT WE HEARD



“I’ll stay here until I’m forced to move.”

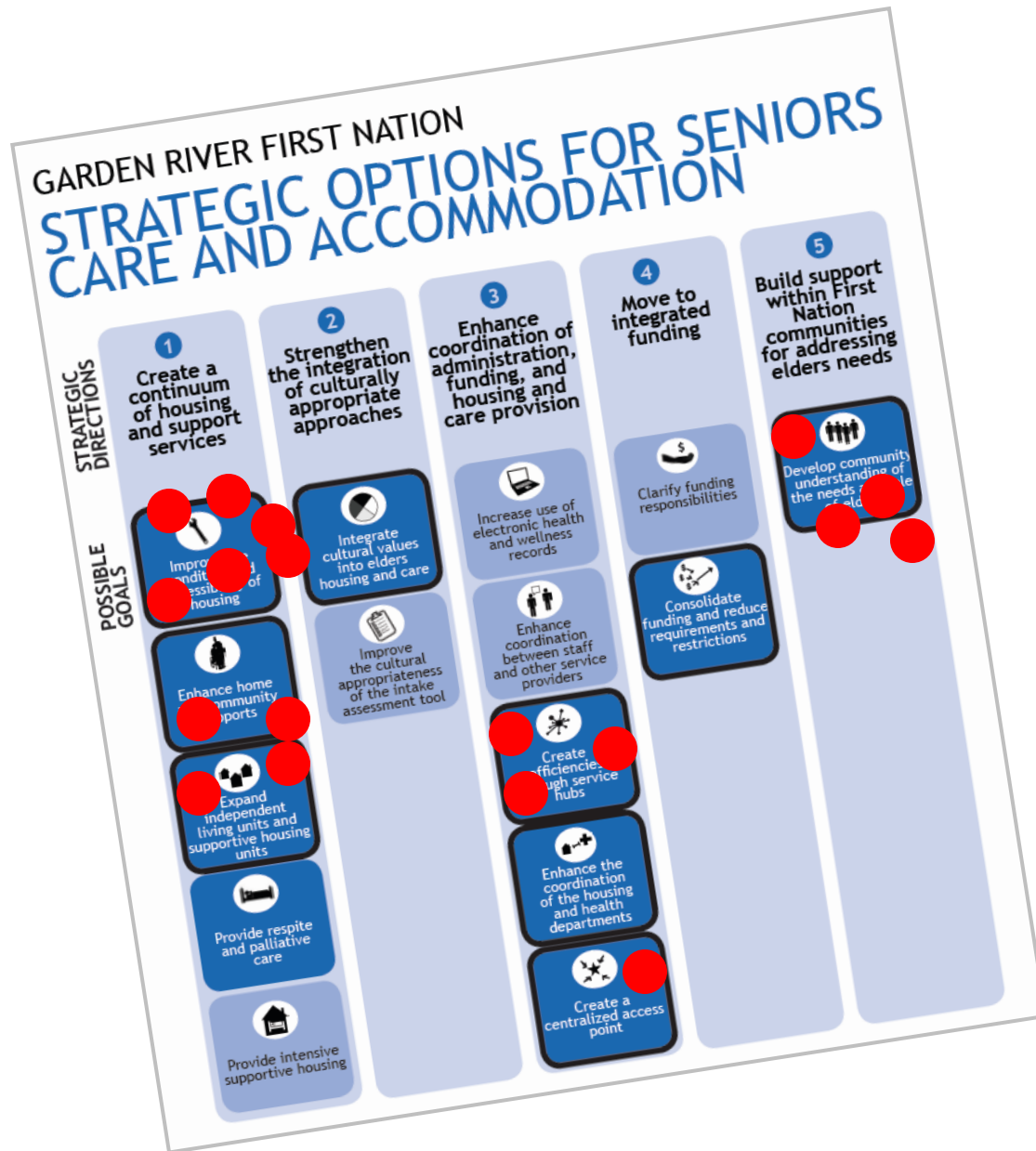


“Long-term care off reserve is good, but they’re not my people.”

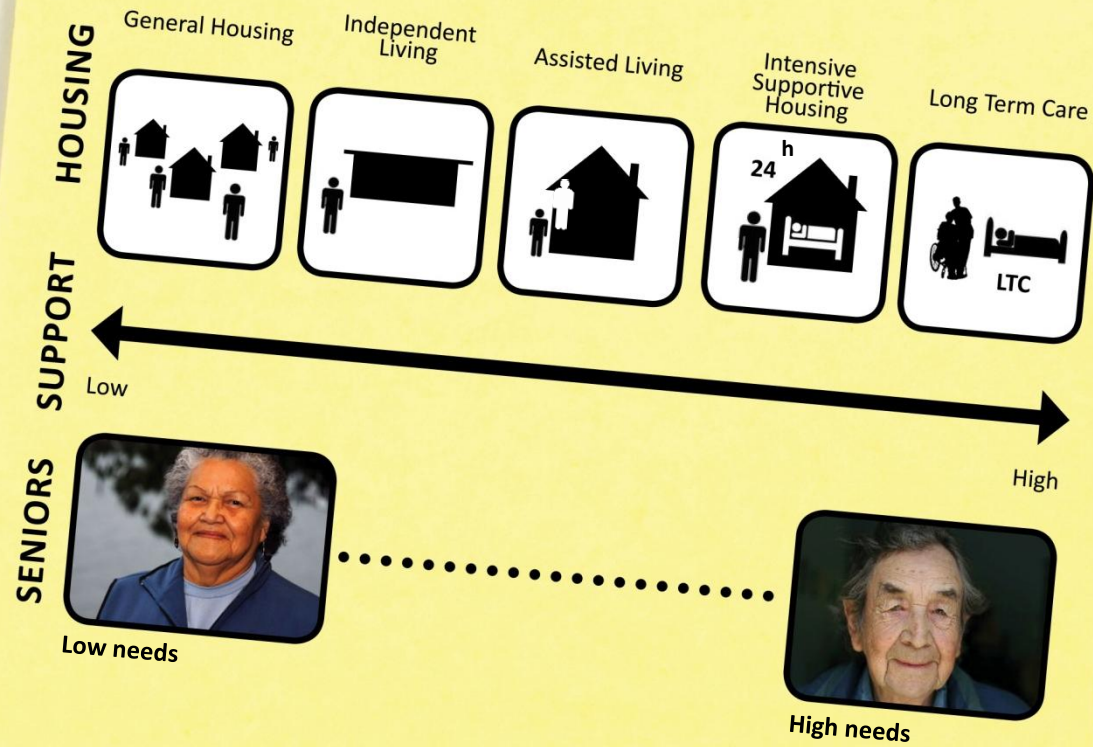


“The community always took care of its elders.”

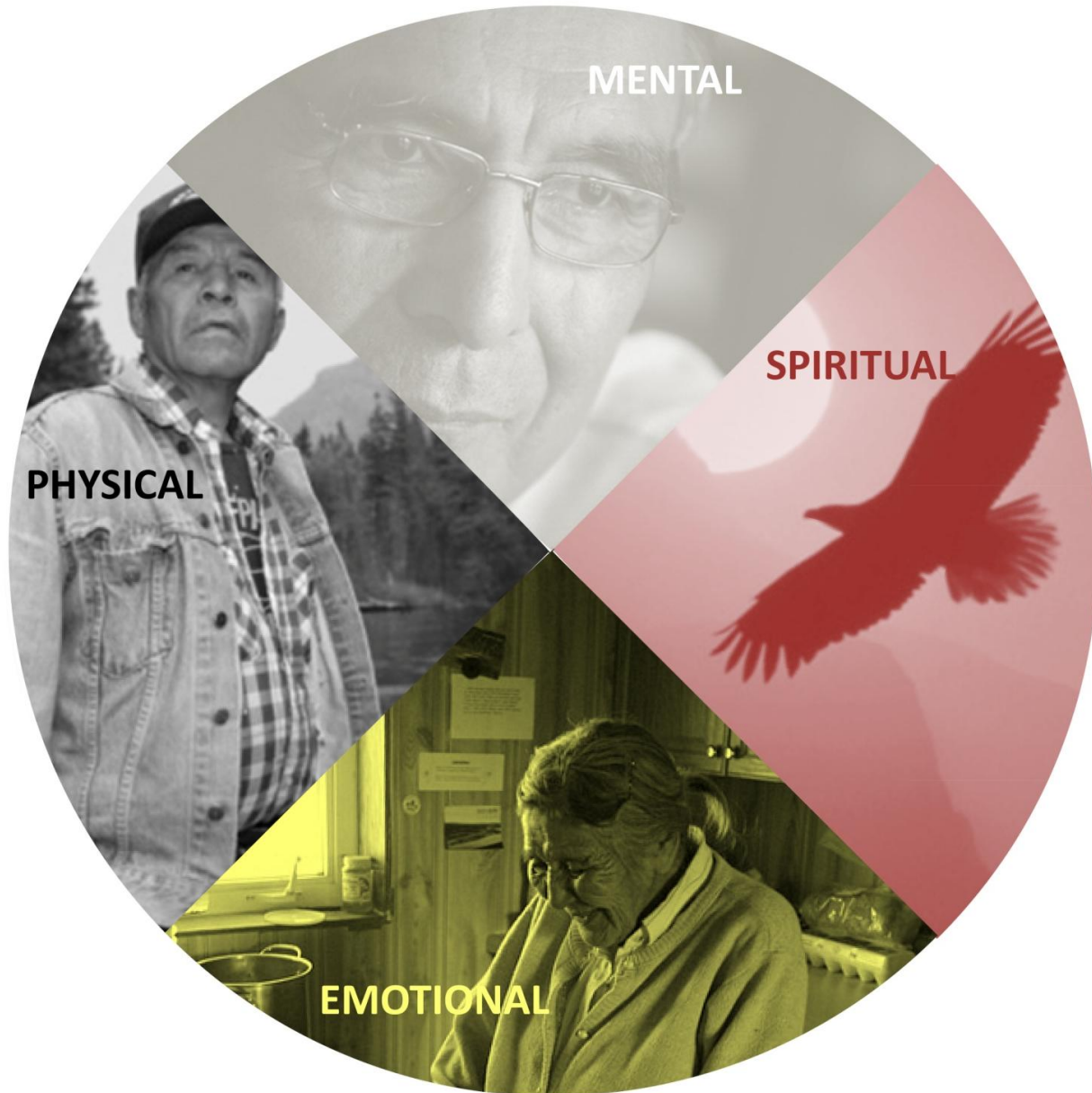
PARTICIPATORY PLANNING



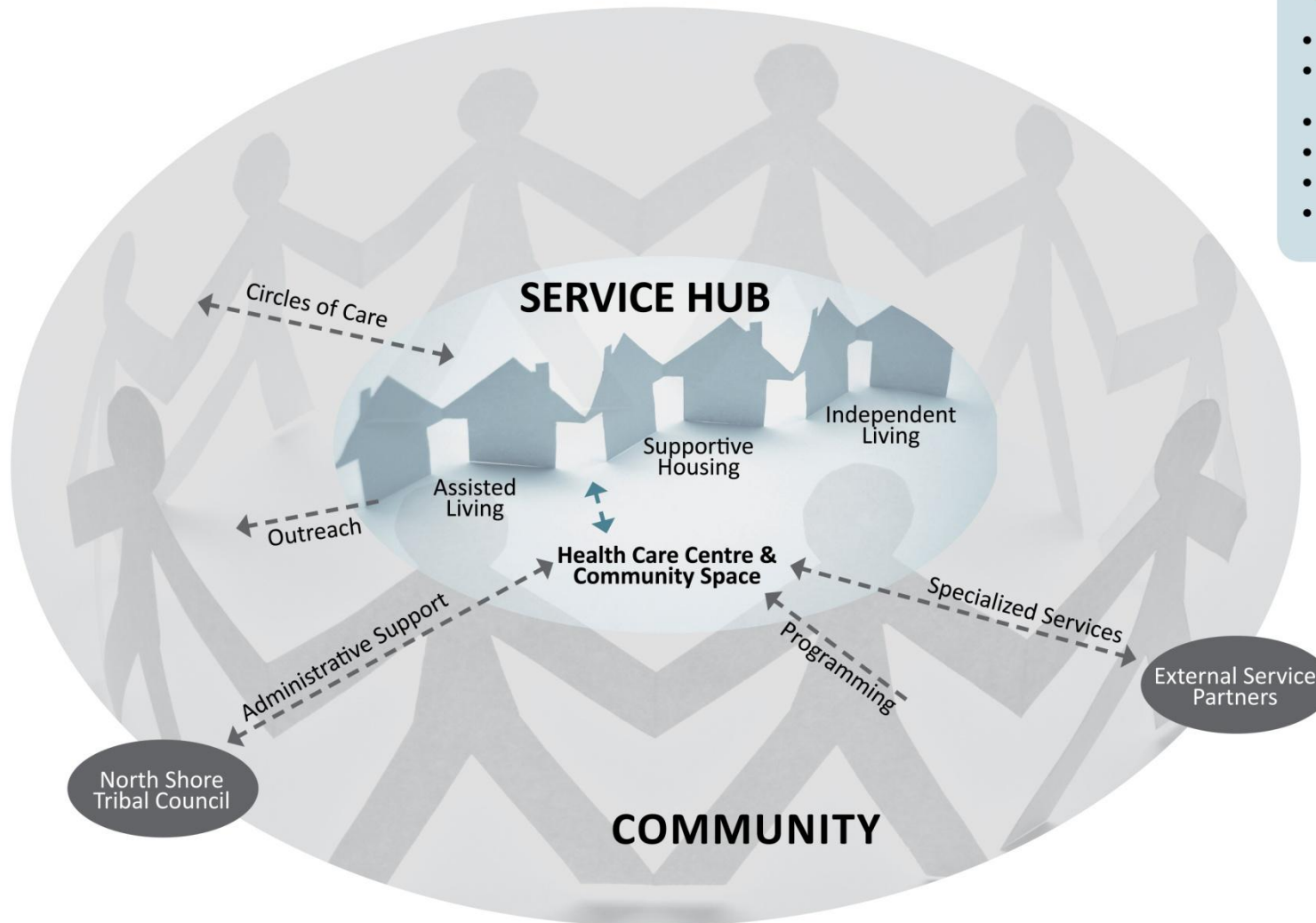
COMPLETE THE CONTINUUM



EMBRACE THE CULTURE

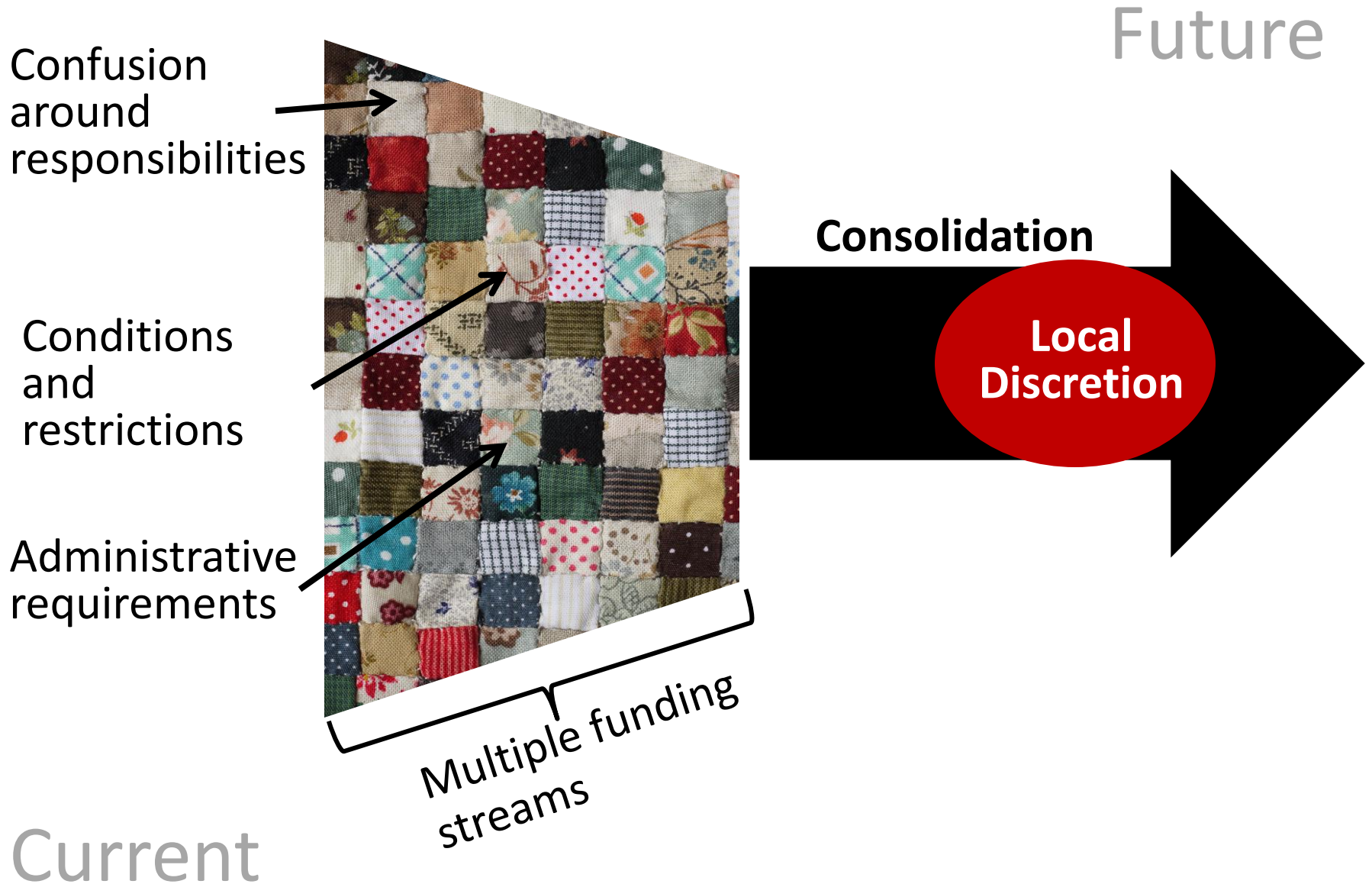


COORDINATE THE CARE



- TOOLS**
- Central access point
 - Electronic health care records
 - Coordinated care plans
 - Team-based care
 - Case management
 - Communication protocol

INTEGRATE THE FUNDS



BUILD THE SUPPORT



MOVING FORWARD



Norval Morrisseau