

Northern Ontario Research Conference  
Sault Ste. Marie, ON June 2-3, 2006

## The Health Promotion Initiative In Diabetes (HPID) Program at GHC

Dr. Pauline Bragaglia, Physician Champion, Diabetes  
Cynthia MacKay, RD, CDE, Department Head, Diabetes

The primary care excellence model 

## HPID at GHC...

A five-year experience  
demonstrating improved outcomes  
which have been sustained.

The primary care excellence model 

## The Ultimate Champion

Health Promotion Initiatives  
was the vision of Dr. Hui Lee.

His leadership and untiring  
efforts left a legacy of  
excellence.

**Dr. Hui Lee**  
1964 - 2004



The primary care excellence model 

## Group Health Centre

A unique community-sponsored,  
not-for-profit, inter-disciplinary  
health organization serving  
60,000 registered patients in  
Sault Ste Marie



- 38 General Practitioners
- 18 Specialists
- 9 Associate and Visiting Specialists
- 8 Nurse Practitioners
- Allied Health Professionals
- 97 Registered Nurses (full and part-time)
- Electronic Medical Record (EMR) since 1997

The primary care excellence model 

## The GHC Model

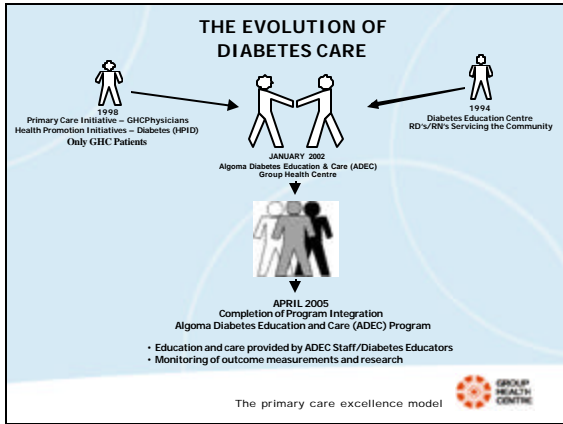
... an example of a different approach to  
service delivery that involves patients in  
their own care, makes better use of health  
providers, and uses leading-edge  
infrastructure and technology to help  
achieve better health outcomes.

The primary care excellence model 

Group Health Centre is the health care partnership of  
the **Sault Ste. Marie and District Group Health  
Association** and the **Algoma District Medical Group**.  
The two groups are linked together by a common  
objective - to provide excellent, innovative,  
comprehensive health care to meet the needs of the  
community.

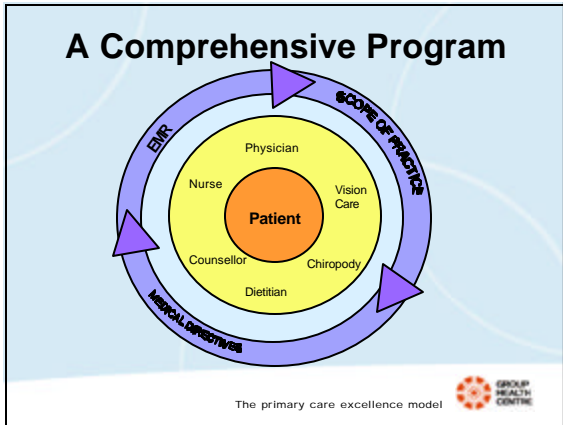


The primary care excellence model 



Group Health Centre is the health care partnership of the **Sault Ste. Marie and District Group Health Association** and the **Algoma District Medical Group**. The two groups are linked together by a common objective - to provide excellent, innovative, comprehensive health care to meet the needs of the community.

The primary care excellence model



### History of Diabetes Care Program

- 1995 - Guideline Committees to HPI
- 1997 - EMR (endless possibilities)
- 1998 - Creation of HPID
- Diabetes templates for physicians
  - 1999 - stats reported to docs
  - 2000 - GHOD scores
- 2002 - Algoma Diabetes Education & Care (ADEC) program joins GHC

The primary care excellence model

### Diabetes Template in EMR

20-Jan-05 MedRpt: HPID Dr's Desktop-Pauline Bragaglia Reason: (21)

(99999998) TESTING PATIENT AltID-SAH-99999998 LV 20Jan05  
 2ND FLOOR 240 MCNABB ST Female (49) 09Sep55 Home:(705)759-1234  
 SAULT STE. MARIE ON P6A 8U7 Ins: BC NA Work: N/A  
 Usual Dr: \*\*\* Unknown Doctor \*\*\* MC F

HPI DIABETES v4	DATE DONE	DATE DUE	LAST VALUE
WT/BMI	[2005/05]	[2006/05]	[95.0 kg] Abd girth[97] cm
BP	*** [2005/06]	[2005/12]	[110]/[70]
HbA1c	*** [2005/04]	[2005/10]	[.090]
EYE EX.	* [2005/05]	[2006/05]	: DR. UNKNOWN
LIPIDS	* [2005/04]	[2006/04]	LDL[1.55] Ratio[3.1]
FEET	*** [2005/08]	[2005/11]	: Decrease pulses
ALB/CREA	* [2005/05]	[2006/05]	:
SMOKER	* [N/A]	[N/A]	Y/N[N]: Quit 1973
FLU SHOT	* [2004/10]	[2005/10]	:
ACE/ARB	Y/N[Y]	ASA/AP[Y]	STATIN Y/N[Y]
THERAPY DIET	Y/N[Y]	EXERCISE Y/N[Y]	ORAL Y/N[N] INSULIN Y/N[Y]

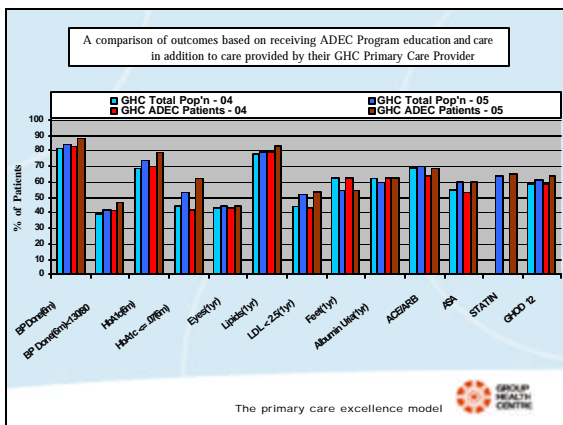
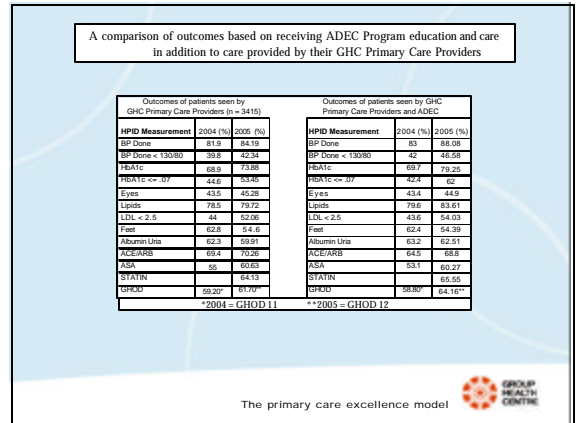
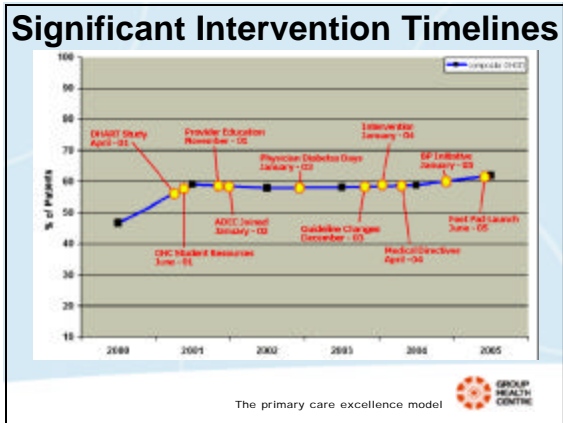
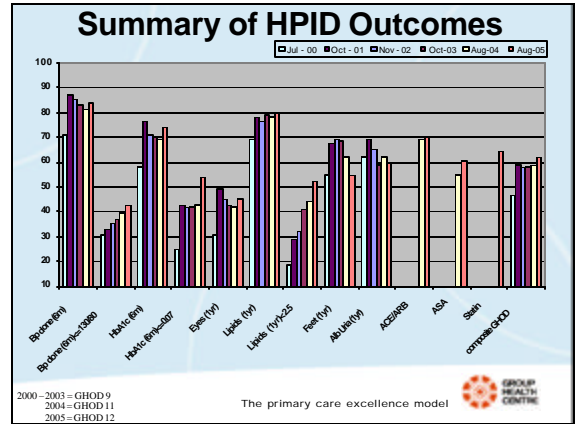
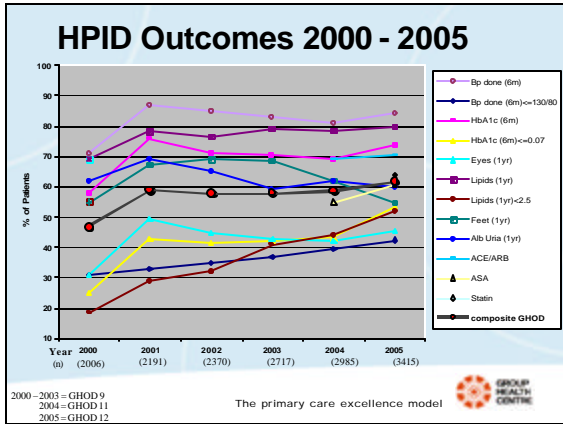
VITALS & NURSING ASSESSMENT (v) January 18, 2005  
 F3, F5Lab SF5Rk F4Merge F6Idx InsInput F78rch F9Prt SF9PI SF4New Sc/Rc Page 1

The primary care excellence model

### Good Health Outcomes in Diabetes (GHOD SCORE)

<h4>Process outcomes</h4> <ul style="list-style-type: none"> <li>• BP within 6 mo</li> <li>• HbA1c within 6mo</li> <li>• Lipids annually</li> <li>• Albuminuria annually</li> <li>• Foot exam within <u>1yr</u> (- From 6 months)</li> <li>• Eye exam within <u>1yr</u> (- from 2yrs)</li> <li>• On ACE/ARB</li> <li>• On ASA/antiplatelet</li> <li>• On Statins</li> </ul>	<h4>Clinical outcomes</h4> <ul style="list-style-type: none"> <li>• BP within 6 mo and &lt;=130/80 mmHg</li> <li>• HbA1c within 6 mo and &lt;= .07</li> <li>• Lipids annually and LDL &lt; 2.5</li> </ul>
---	---

The primary care excellence model



### Significance

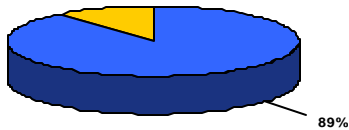
Ability to maintain and/or improve GHOD scores despite:

- adding to GHOD Score
- more stringent outcomes in Dec. 03 CPGs
- increase in number of Primary Care providers
- changes in allied health professionals
- increase in patient volumes
- loss of Dr. Hui Lee

The primary care excellence model

## Physician Self-Monitoring of HPID Results 2005

33 out of 37 Physicians chose to self-monitor



The primary care excellence model 

## Benefits to Patients and Interdisciplinary Team

- Integrated
- Better Communication
- Timeliness of Care
- Education
- Accountability
- Accessibility
- Collaborative
- Sustainability

The primary care excellence model 

## Secrets of Our Success!

- Comprehensive diabetes care team with
  - physician champion
  - empowered patients
- Coordinated delivery of diabetes care
- Electronic Medical Record (EMR) (systematic documentation process)

The primary care excellence model 

An empowered patient  
+  
an engaged team  
  
= GREAT care!

Dr. Hui Lee

The primary care excellence model 

## National Recognition

- Presented at National Conferences
- Selected as 1 of 5 Programs of Excellence by National Health Council of Canada for video launch <http://hcc-ccs.com/videos.aspx>
- Inaugural Tommy Douglas Future of Medicare Award for Primary Care (2005)
- Only healthcare organization in Canada to receive 4 consecutive National Best Practice Awards at OHA Conference (2003, 2004, 2005, 2006)

The primary care excellence model 

## THANK YOU!

Contact info:

Dr. Pauline Bragaglia  
Algoma District Medical Group  
Group Health Centre

[bragaglia\\_p@ghc.on.ca](mailto:bragaglia_p@ghc.on.ca)

Cynthia MacKay, RD, CDE  
Department Head, Diabetes  
Group Health Centre

[mackay\\_c@ghc.on.ca](mailto:mackay_c@ghc.on.ca)

Visit our web site – [www.ghc.on.ca](http://www.ghc.on.ca)

The primary care excellence model 